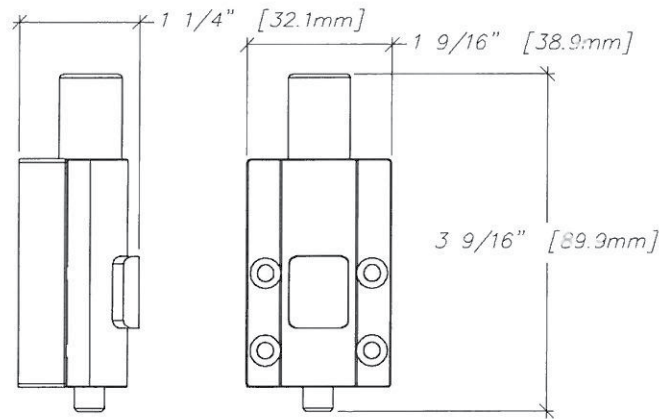


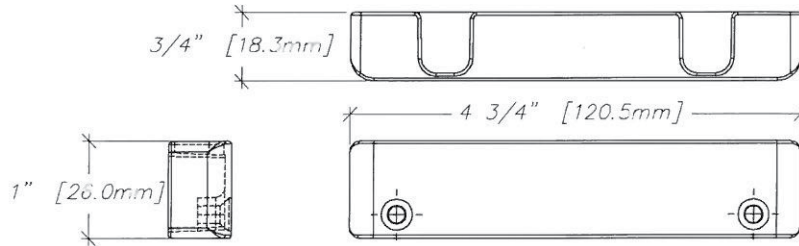
FOOT LOCK - REQUIRED PARTS

Secondary Lock for Patio Door Kit No. 9860.ENS01 (1x Two (2) Panel Patio Door)
 (1x Three (3) Panel Patio Door)
 (2x Four (4) Panel Patio Door)

-Secondary lock (1x)

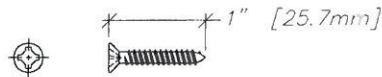


Keeper (1x)



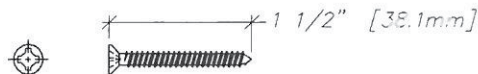
Fixation screw for secondary lock

-No. 8 x 1", flat head, Quadrex screw (4x)



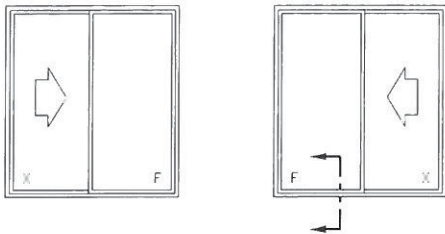
Fixation screw for keeper

-No. 8 x 1 1/2", flat head, Quadrex screw (2x)

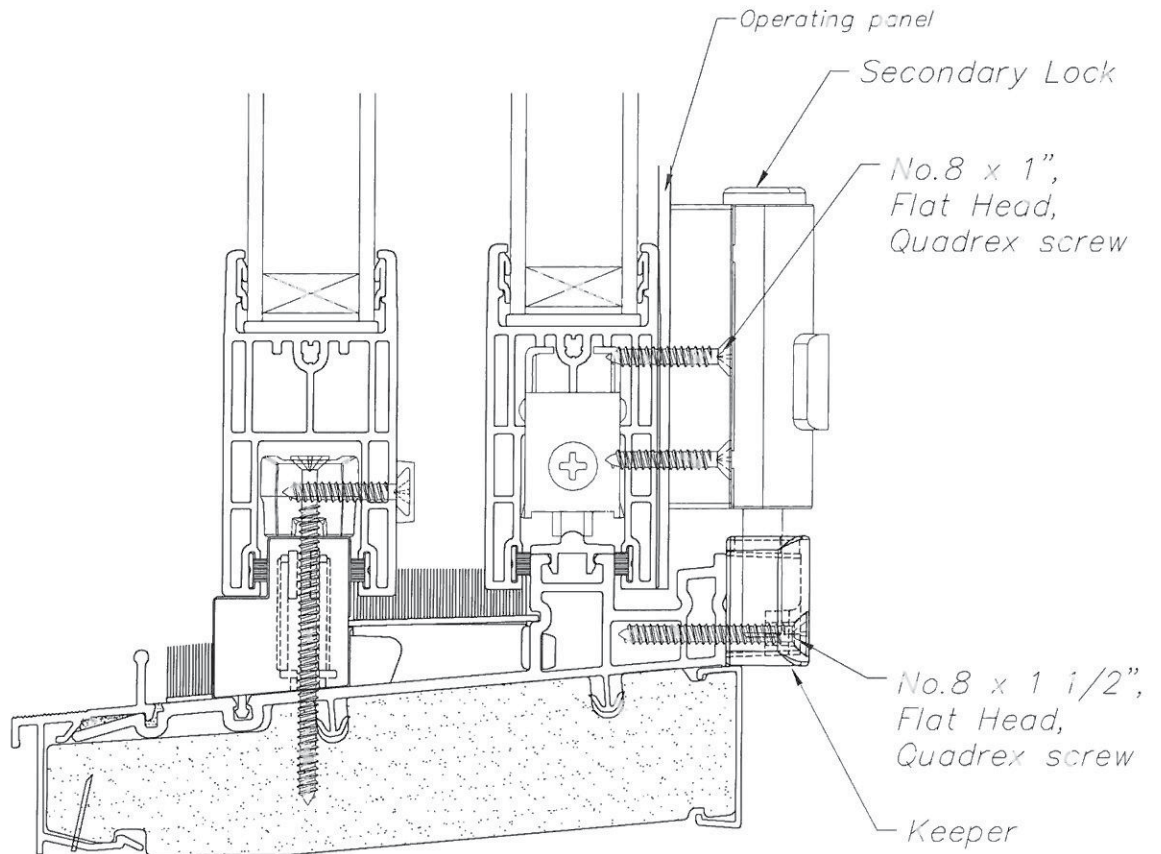


FOOT LOCK - ASSEMBLY SECTION

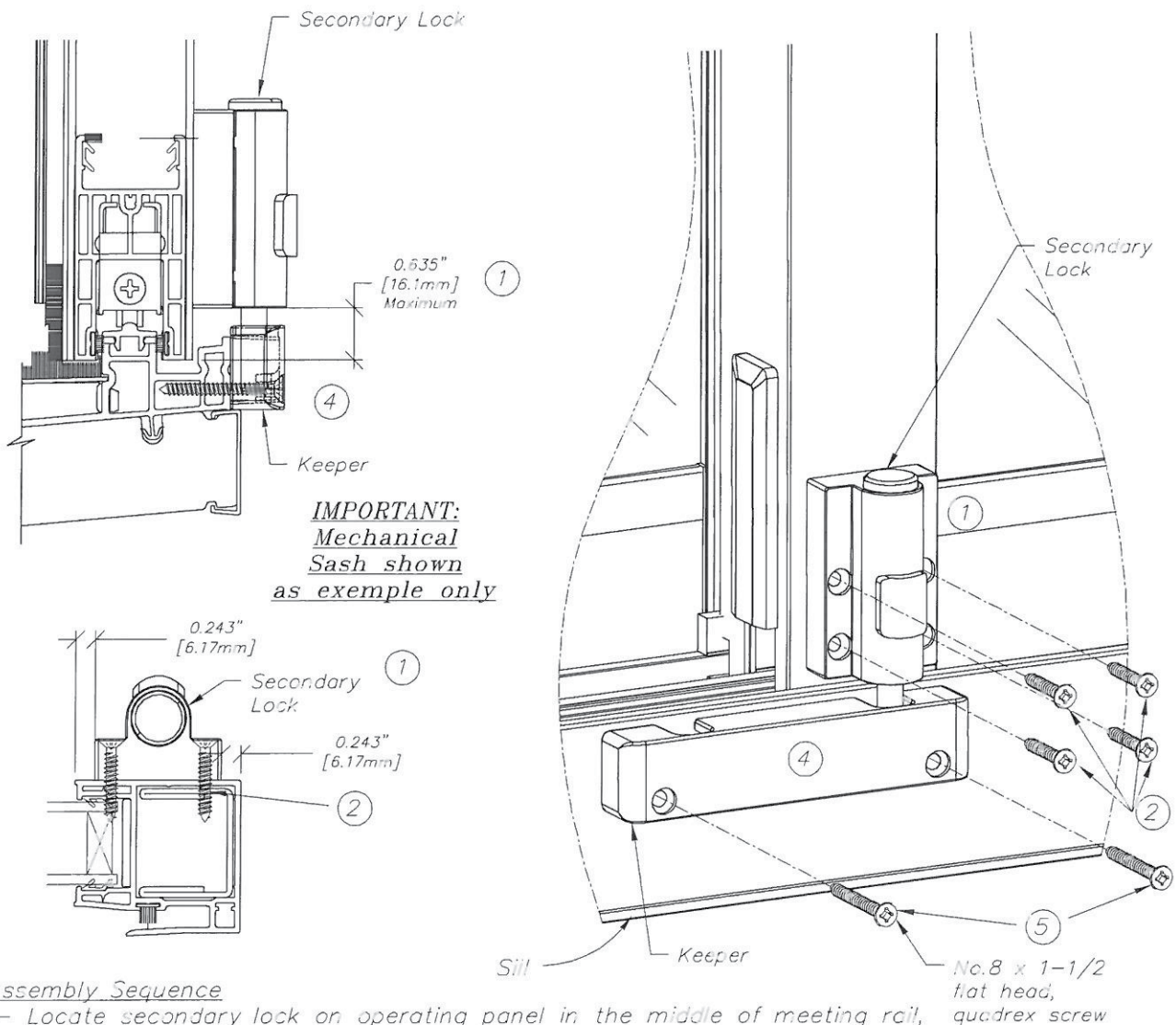
Two (2) Panel Patio Door*



* Also available for three (3) and four (4) panel patio door.



FOOT LOCK - SECONDARY LOCK & KEEPER INSTALLATION



IMPORTANT:
Mechanical Sash
 shown
 as exemple only

Assembly Sequence

- 1- Locate secondary lock on operating panel in the middle of meeting rail, making sure the height is as indicated on drawing.
- 2- Install secondary lock to operating panel meeting rail, using four (4) screws No.8 x 1", flat head.
- Important* : you must pre-drill two (2) 0.125" [3mm] diameter holes in the steel reinforcement before screwing the secondary lock. (mechanical sash only)
- 3- Make sure the operating panel is in a closed and locked position.
- 4- Lock secondary lock and position keeper on sill No. 700 according to latch in the middle of first keeper hole as indicated on drawing.
- 5- Install keeper to No. 700 sill, using two (2) screws No.8 x 1 1/2", flat head.

Note: Installation instructions are only given as a reference.

The use at a secondary lock is not a P.H. Tech recommendation in regards, to security.