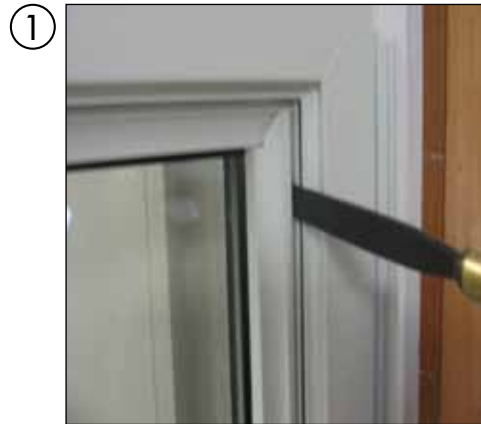
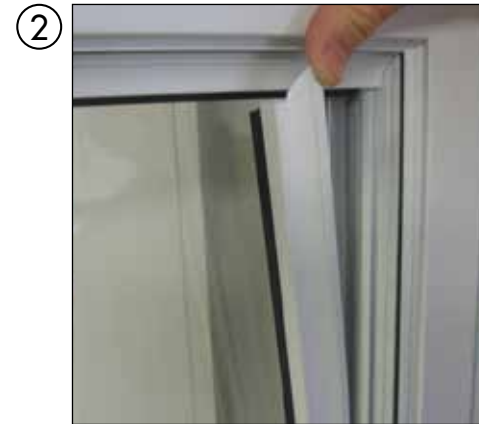


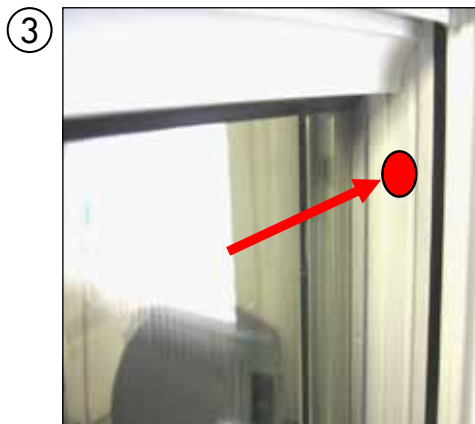
FIXED CASEMENT INSTALLATION INSTRUCTIONS



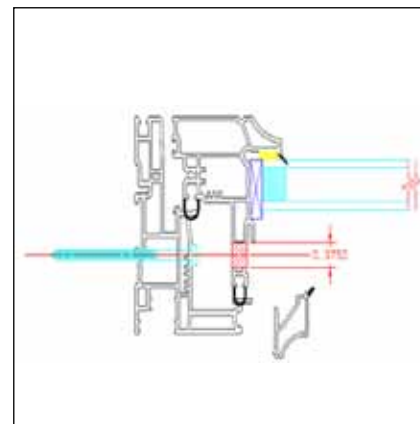
Remove the glazing beads on a fixed window, using a sharp chisel.



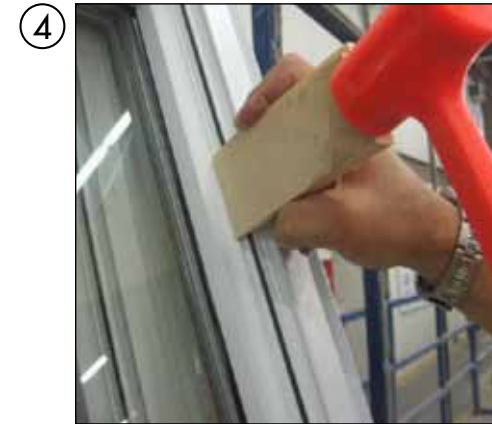
Remove both sides of the glazing beads to be able to pre-drill the installation holes.



Once the glazing beads have been removed, a 3/8" hole can now be pre-drilled so that the installation screws catch the second interior channel (see diagram). Note: no need to cap the hole.



diagram



Snap the glazing beads back in manually or carefully tap them in using a small block of wood at this location.