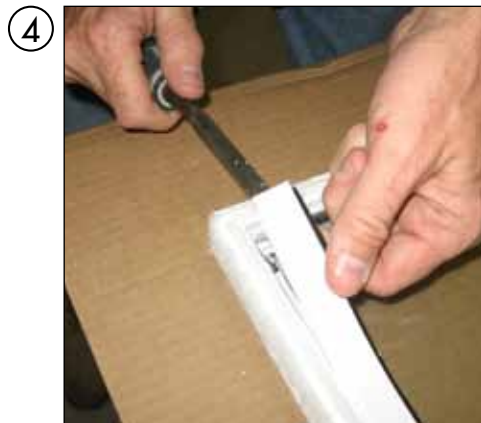
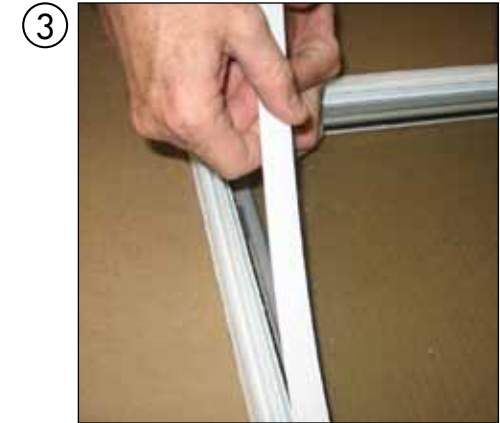


REMOVAL AND RE-INSTALLATION OF THERMAL UNIT



Start by removing vertical glazing stop. Use a sharp chisel to get under glazing bead.



Continue around the sash removing all 4 glazing beads.



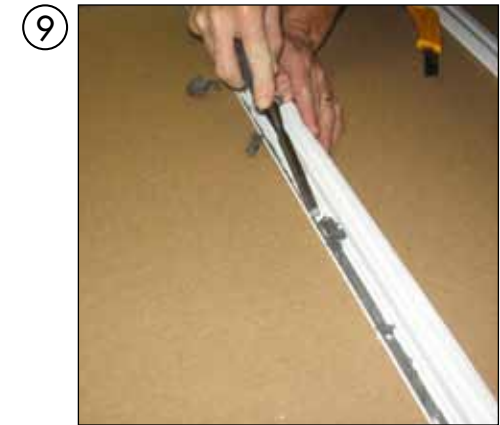
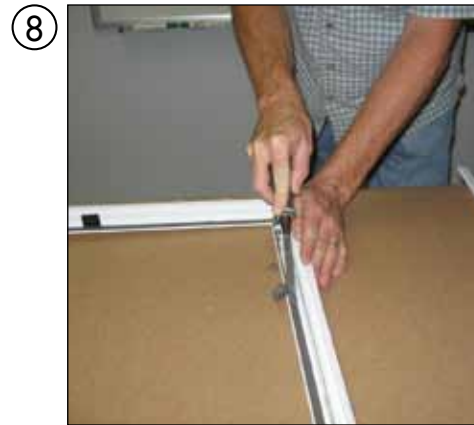
Flip sash so interior is facing up. Slide a drywall knife between glass and sash. Cut glazing tape on all 4 sides.



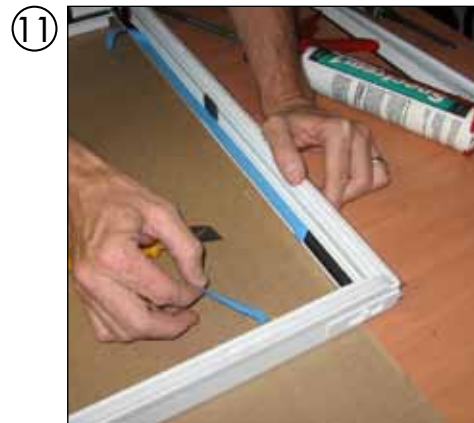
REMOVAL AND RE-INSTALLATION OF THERMAL UNIT



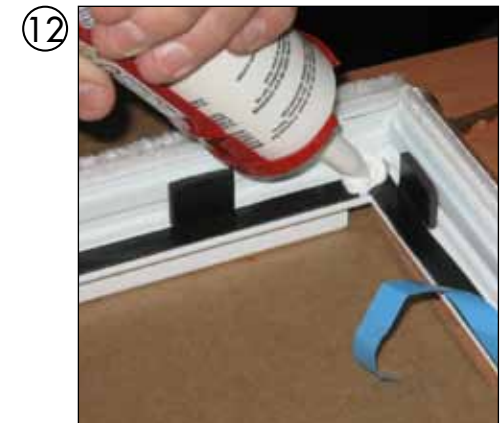
Remove thermal and remove all glazing tape that remains on the interior of the sash.



Apply new glazing tape to sash on all 4 sides.



Peel back tape liner approx. 2-3" in each corner and bend under sash to remove later.

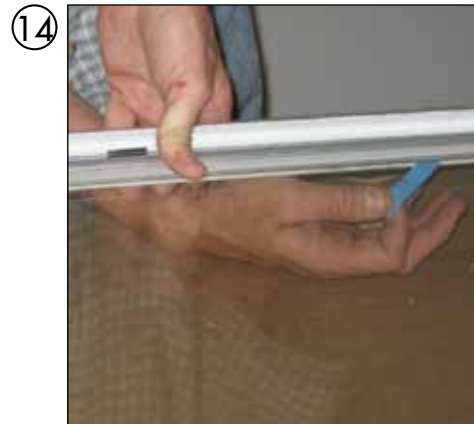


Apply sealant at 4 corners where the pieces of glazing tape meet. This will prevent air and water leaks. Make sure the black glazing blocks are in place.

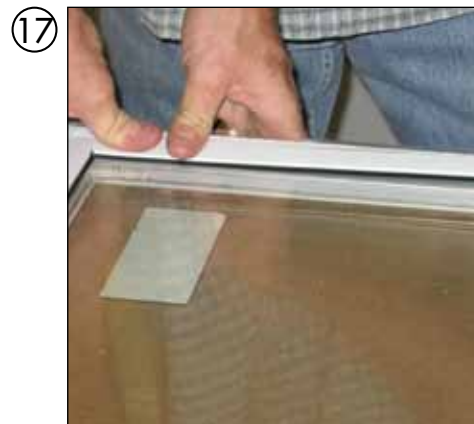
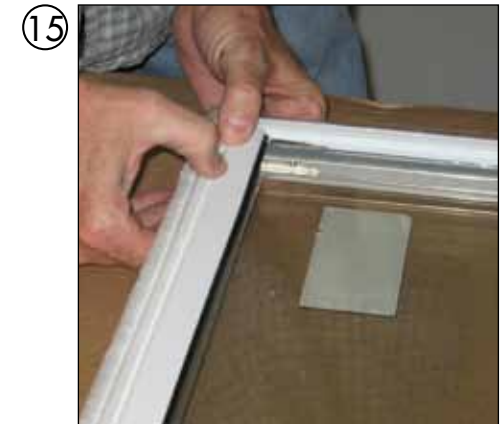
REMOVAL AND RE-INSTALLATION OF THERMAL UNIT



Set glass in sash making sure before the glass contacts the tape that all will be square; no bowing.



Reach under sash and carefully peel off the backing of the tape. Once this is done on all 4 sides the glass will be stuck to the tape.



Check again to make sure the sash is square and not bowing. The space between the edge of glass and edge of sash should be the same all around.

Start by installing the horizontal glazing beads, snap into each corner and work towards the center on each piece only applying pressure with your thumbs.